

tower:

Distribution Boxes



63A/3 > 1x32A/3, 3x32A, 12x13A



125A/3 > 5x 32A/3

tower:



Powerlock, 2x 125A/3, 3x 63A/3, 1x 32A/3, 1x 16A/3 3x 32A, 3x 16A (Powerlock Distro Type 'B')

tower:



Powerlock < Powerlock, 1x 125A/3, 3x 63A/3, 3x 32A, 3x 16A [Powerlock Distro Type 'A']

tower:



Powerlock < Powerlock, 1x 125A/3, 3x 63A/3, 3x 32A, 3x 16A [Powerlock Distro Type 'A']

tower:



63A/3 > 6x 32A, 3x 16A

tower:



63A/3 > 5x 16A/3, 3x 16A

tower:



Powerlock > Powerlock, 2x 125A/3, 4x 63A/3, 6x 32A/3, 6x 32A, 6x 16A (Powerlock Distro Type 'C')

tower:



63A/3 > 3x 32A/3

tower:



63A/3 > 2x 32A/3, 1x 16A/3

tower:



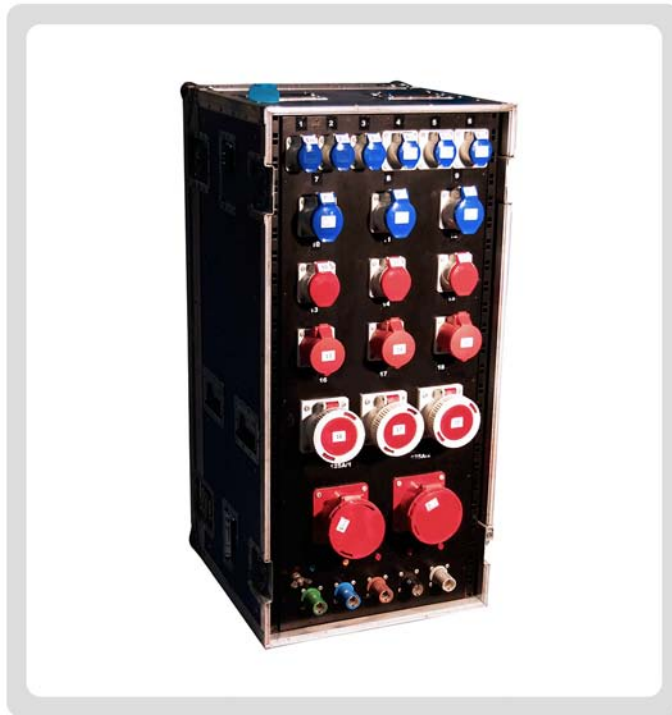
63A/3 > 3x 63A

tower:



63A/3 variable in-line RCD

tower:



Powerlock > 2x 125A/3, 3x 63A/3, 3x 32A/3, 3x 16A/3, 3x 32A, 6x 16A (Powerlock Distro Type 'E')

tower:



32A/3 variable in-line RCD

tower:



32A > 4x 16A

tower:



125A/3 > 2x 63A/3, 1x 16A/3

tower:



125A/3 > 5x 32A/3

tower:



16A/3 > 6x 16A [Gewiss]

tower:



125A/3 > 2x 63A/3

tower:



125A/3 > 3x 32A/3, 3x 32A, 3x 16A

tower:



32A > 4x 13A (Gewiss)

tower:



125A/3 > 2x 63A/3, 3x 63A

tower:



32A/3 > 3x 16A, 12x 13A

tower:



125A/3 > 1x 63A/3, 2x 32A/3, 12x 32A, 6x 16A

tower:



63A/3 > 6x 32A

tower:



32A/3 > 3x 32A

tower:



125A > 4x 32A, 4x 16A

tower:



32A/3 > 3x 32A, 3x 16A

tower:



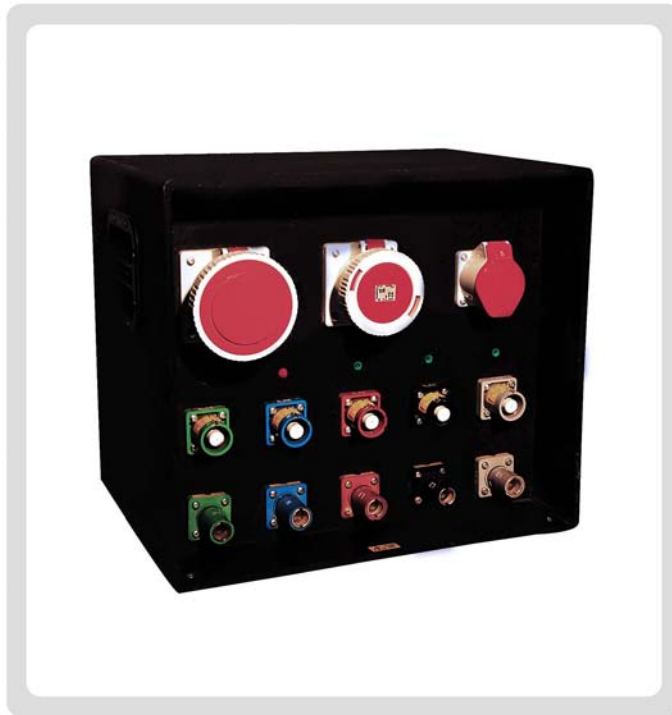
63A > 8x 16A

tower:



Powerlock > Powerlock, 3x 63A/3 (Powerlock Distro Type 'G')

tower:



Powerlock > Powerlock, 2x 125/3, 3x 63A/3, 1x 32A/3, 1x 16A/3, 3x 32A, 3x 16A (Powerlock Distro Type 'B')

tower:



125A/3 > 1x 63A/3, 3x 32A/3, 3x 63A, 3x 32A, 3x 16A > 125A/3

tower:



Powerlock > 3x 125A/3, 1x 32A/3 (Powerlock Distro Type 'F')

tower:



32A > 4x 16A [Gewiss]

tower: